



The Midland Metropolitan University Hospital



Designed to help you, your family and everyone in our local area to get better access to health and care

How to get to the new hospital



The new hospital address is

Grove Lane
Smethwick
B66 2QT



There is parking for patients and visitors at the front of the building.



You can catch the number 54, 54A and 89 bus to the hospital.

The number 82 and 87 bus will drop you at the end of the road. You can then walk up to the hospital.



The nearest train station is Smethwick Rolfe Street.

Services at the new hospital



The accident and emergency department.



A children's accident and emergency department with an assessment unit.



Separate wards for adults and children some have their own bathrooms.



Operating theatres for emergency planned and maternity surgery.



A midwife led birthing unit with a delivery suite, maternity wards and **antenatal** services.

Antenatal means before the baby is born.

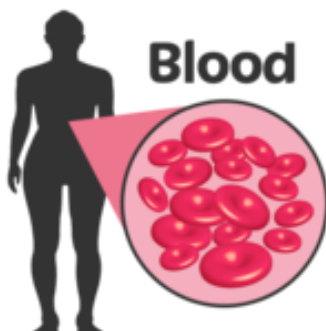


A **neonatal** unit

Neonatal means born before they are expected.



Same day emergency care for adults.



Sickle cell and **thalassaemia** centre.

These are **blood disorders**.

Important Dates



We will be closing Sandwell accident and Emergency department and City Accident and Emergency Department.

This means we will have more staff to work at the new hospital.



Sandwell Hospital Accident and Emergency Department will close on the 6th October 2024.



City Hospital Accident and Emergency department will close on the 10th November 2024.

When to go to the Accident and Emergency Department or call 999



Signs of a heart attack.



Signs of a stroke.



Sudden confusion.



A suicide attempt.



Severe difficulty breathing.



Choking.



Excessive blood loss.
Excessive means lots.



Severe injuries or sudden swelling.



Seizures and fits.

When to go to the Urgent Treatment Centre



Suspected broken bones.



Strains and Sprains.



Injuries like cuts and bruises.



Stomach pain, being sick and having an upset stomach.



Skin infections and rashes.



High Temperatures.



If you need a prescription.



Emergency contraception.

Important



We should use the Urgent Treatment Centre, so that the Accident and Emergency Department can treat the people who need it most.



The Urgent Treatment centres have nurses that can tell you what is wrong and how to make it better. This means you do not need to go to Accident and Emergency.



You can call NHS 111 who will help you or go online www.nhs.111.uk